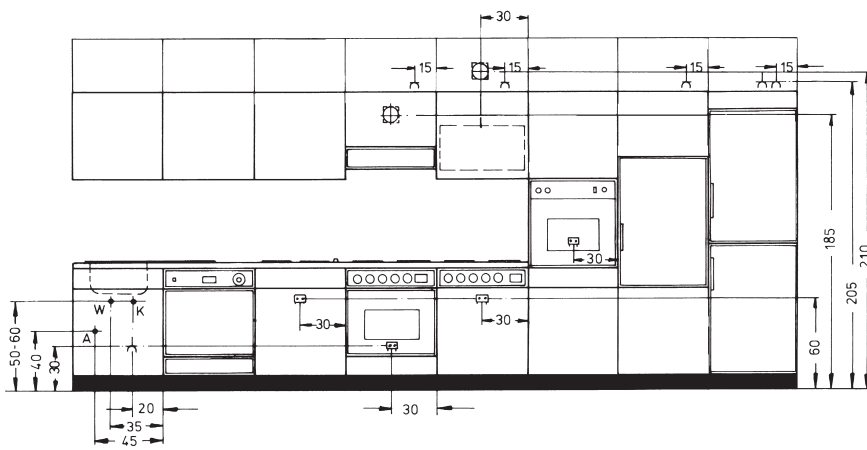



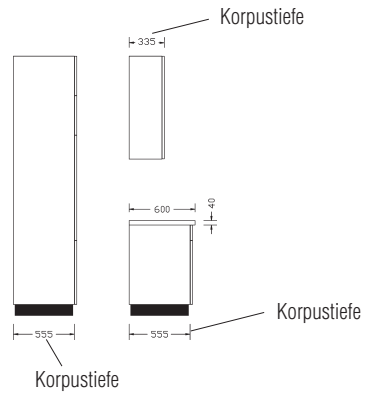
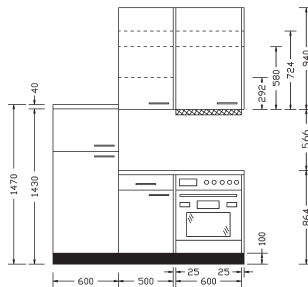
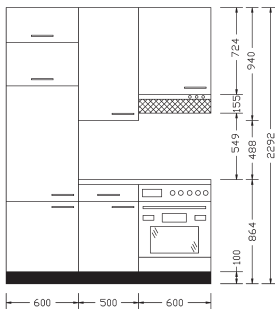
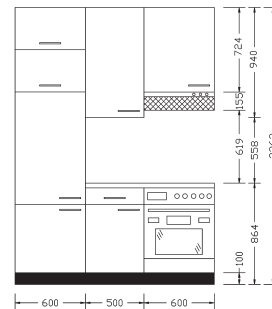
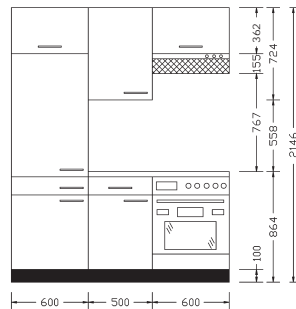
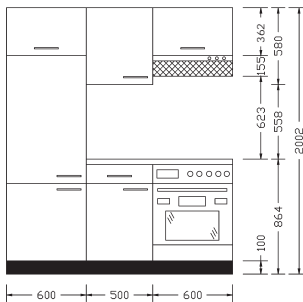


# Installationsvorschläge



-  Teleskop-Mauerkasten  
Ø 120 mm Dunstabzug
-  Schutzkontaktsteckdose
-  Herdanschlußdose 220/380 V WS  
10 kW je nach Gerätetyp
- + W Warmwasserzulauf
- + K Kaltwasserzulauf
- + A Ablauf

## Massübersicht



## Massübersicht XL

