

Farbmuster Spülen und Mischbatterien

SCHOCK 
sink different!

SCHOCK 
sink different!

systemceram
KeraDomo-Küchenkeramik



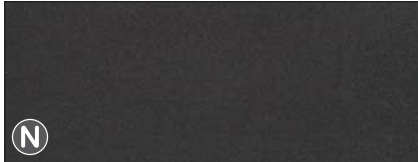
Material: Cristalite
Farbe: Anthrazit (Onyx)



Material: NanoGranite
Farbe: Alumetallic (Lucida)



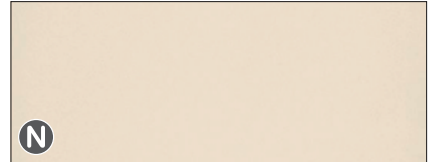
Material: Keramik
Farbe: Fango



Material: Cristalite
Farbe: Basaltschwarz (Nero)



Material: NanoGranite
Farbe: Anthrazit (Magma)



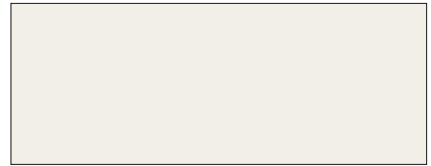
Material: Keramik
Farbe: Jasmin



Material: Cristalite
Farbe: Grau Metallic (Inox)



Material: NanoGranite
Farbe: Carbonium (Carbonium)



Material: Keramik
Farbe: Polar



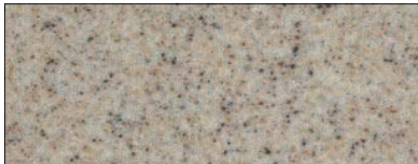
Material: Cristalite
Farbe: Jasmin (Colorado)



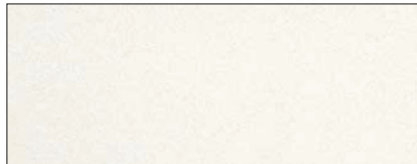
Material: NanoGranite
Farbe: Magnolie (Magnolia)



Material: Keramik
Farbe: Schiefer



Material: Cristalite
Farbe: Sand (Terra)



Material: NanoGranite
Farbe: Weiß (Polaris)



Material: Cristalite
Farbe: Steingrau (Arena)